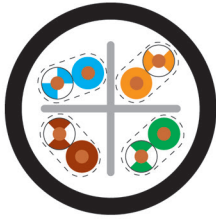


HELUKAT® 300LAN CAT.6 U/UTP PE STATIC OUTDOOR



for outdoor use



HELUKAT® 300LAN CAT.6 U/UTP PE STATIC OUTDOOR

TECHNICAL DATA

LAN cable / Cat. 6 acc. to ISO/IEC 11801, DIN EN 50173, IEC 61156-5, EN 50288-6-1

Temperature range	flexible 0°C to +50°C fixed -20°C to +60°C fixed installation -20°C to +60°C during installation 0°C to +50°C
Peak operating voltage	125 V (not for high power current installation purposes)
Conductor resistance at 20°C	max. 95.0 Ohm/km
Loop resistance at 20°C	max. 190.0 Ohm/km
Mutual capacitance core/core	at 800 Hz, approx. 50 pF/m
Rel. Velocity of Propagation	approx. 67%
Characteristic impedance	at 1 to 100 MHz, 100 Ohm ± 15 Ohm at 101 to 300 MHz, 100 Ohm ± 20 Ohm
Caloric load	approx. 0.30 MJ/m
Minimum bending radius	during installation 8x Outer-Ø fixed installation 4x Outer-Ø

- Separator
- Foil wrapping
- Outer sheath: PE
- Sheath colour: black
- Length marking: in metres

PROPERTIES

- resistant to UV radiation
- for outdoor use
- halogen-free

TESTS

- halogen-free acc. to DIN VDE 0482-754-1 / DIN EN 60754-1 / IEC 60754-1
- corrosiveness of combustion gases acc. to DIN VDE 0482-754-2 / DIN EN 60754-2 / IEC 60754-2

APPLICATION

Data cable for structured cabling systems with generous headroom and outstanding performance, for use in the tertiary and secondary areas of networks. Its special mechanical properties and optimised construction allow for easy installation. The UV-resistant PE sheath makes it suitable for outdoor installations.

NOTES

- Conductor sizes are based on the AWG measurement system, metric conductor sizes (mm²) are approximated and are for reference only

CABLE STRUCTURE

- Copper conductor bare, AWG sizes
- Core insulation: PE
- Core identification: colour coded, pairs:
 - No. 1: white-blue / blue
 - No. 2: white-orange / orange
 - No. 3: white-green / green
 - No. 4: white-brown / brown
- Cores stranded in pairs with optimal lay lengths

TYPICAL VALUES

	10	16	62.5	100	155	200	300
Frequency (MHz)							
Attenuation (dB/100m)	5.6	7.0	14.3	18.2	22.9	26.0	32.5
NEXT (dB)	72.0	70.0	65.0	63.0	60.0	57.0	55.0
ACR (dB/100m)	66.4	63.0	50.7	44.8	37.1	31.0	22.5

Part no.	No. cores x AWG-No.	Cross-sec. mm ² , approx.	Conductor Ø mm, approx.	Core Ø mm, approx.	Outer Ø mm, approx.	Cu factor per km	Weight kg/km, approx.
805683	4 x 2 x AWG 24 / 1	0.24	0.55	0.98	6.4	19.0	47.0