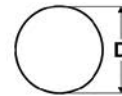


BL-W

soft



TECHNICAL DATA

Foam blind plate

Temperature range -20°C to +70°C

■ STRUCTURE

- Material: foam

■ APPLICATION

- Machine and plant construction
- Robotics
- Automation technology
- Vehicle construction and shipbuilding
- Railway technology
- Installation technology
- Control cabinet construction
- As dust cap for HSK cable glands.

■ NOTES

- Legend:
Dimensions
D - Outer diameter

Part no.	Size	Size	Size	Outer Ø mm, approx.	Packaging unit (in pc.)
96376	PG 7			11.0	500
96377	PG 9	M16 x 1.5	NPT 3/8"	13.5	500
96378	PG 11			17.0	500
96915	PG 13.5	M20 x 1.5	NPT 1/2"	18.8	500
96379	PG 16			20.9	500

Part no.	Size	Size	Size	Outer Ø mm, approx.	Packaging unit (in pc.)
96380	PG 21	M25 x 1.5	NPT 3/4"	26.5	500
96381	PG 29	M32 x 1.5	NPT 1"	35.0	250
96382	PG 36	M40 x 1.5	NPT 1 1/2"	45.0	100
96383	PG 42	M50 x 1.5		52.0	50
96384	PG 48	M63 x 1.5		57.4	50