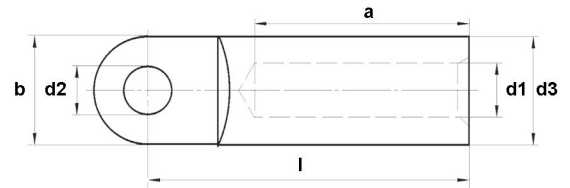


HELU-S-PK-AL-FG-VZN



TECHNICAL DATA

Compression cable lug

Flange shape Ring shape
Connecting angle 180° (horizontal)

■ STRUCTURE

- Material: Aluminium 99,5
- Surface: galvanic tin plated
- uninsulated
- without Inspection hole

■ APPLICATION

- Uninsulated, straight extruded tubular cable lug in eye type design made of aluminium.
High quality version for reliable crimping.
To DIN46329

■ NOTES

- Code type indicates the required hexagonal crimping insert. Sleeves are prefilled with contact grease and sealed with plastic plug
- Recommended pressing method: Hexagonal pressing
- Legend:
Dimensions
a - Diameter of stud hole
b - Width of flange
d - Inner diameter of wire receptable
l - Length to centre of hole

Part no.	Type	Nennquerschnitt RM/SM- RE/ SE mm ²	ø Stud hole (a) in mm	Flange width (b) in mm	ø Wire receptable (d) in mm	Length (l) in mm	Code type	Weight in kg/1000 pc.	Packaging unit (in pc.)
909853	HELU-S-PK-AL-FG-VZN 16-8	16.00 - 25.00	8.0	20.0	5.8	53.0	12	13.4	50
909854	HELU-S-PK-AL-FG-VZN 16-10	16.00 - 25.00	10.5	20.0	5.8	53.0	12	13.0	50
909855	HELU-S-PK-AL-FG-VZN 25-8	25.00 - 35.00	8.0	25.0	6.8	53.0	12	14.0	50
909856	HELU-S-PK-AL-FG-VZN 25-10	25.00 - 35.00	10.5	25.0	6.8	53.0	12	13.6	50
909857	HELU-S-PK-AL-FG-VZN 25-12	25.00 - 35.00	13.0	25.0	6.8	53.0	12	13.1	50
909858	HELU-S-PK-AL-FG-VZN 35-8	35.00 - 50.00	8.0	25.0	8.0	65.0	14	20.3	50
909859	HELU-S-PK-AL-FG-VZN 35-10	35.00 - 50.00	10.5	25.0	8.0	65.0	14	19.9	50
909860	HELU-S-PK-AL-FG-VZN 35-12	35.00 - 50.00	13.0	25.0	8.0	65.0	14	19.4	50
909861	HELU-S-PK-AL-FG-VZN 50-8	50.00 - 70.00	8.0	25.0	9.8	65.0	16	25.9	25
909862	HELU-S-PK-AL-FG-VZN 50-10	50.00 - 70.00	10.5	25.0	9.8	65.0	16	25.5	25
909863	HELU-S-PK-AL-FG-VZN 50-12	50.00 - 70.00	13.0	25.0	9.8	65.0	16	24.8	25
909864	HELU-S-PK-AL-FG-VZN 70-8	70.00 - 95.00	8.0	25.0	11.2	75.0	18	36.8	25
909865	HELU-S-PK-AL-FG-VZN 70-10	70.00 - 95.00	10.5	25.0	11.2	75.0	18	36.3	25
909866	HELU-S-PK-AL-FG-VZN 70-12	70.00 - 95.00	13.0	25.0	11.2	75.0	18	35.6	25
909867	HELU-S-PK-AL-FG-VZN 95-8	95.00 - 120.00	8.0	25.0	13.2	81.0	22	58.1	10
906562	HELU-S-PK-AL-FG-VZN 95-10	95.00 - 120.00	10.5	25.0	13.2	81.0	22	57.5	10

HELU-S-PK-AL-FG-VZN

Part no.	Type	Nennquerschnitt RM/SM-RE/SE mm ²	∅ Stud hole (a) in mm	Flange width (b) in mm	∅ Wire receptable (d) in mm	Length (l) in mm	Code type	Weight in kg/1000 pc.	Packaging unit (in pc.)
906563	HELU-S-PK-AL-FG-VZN 95-12	95.00 - 120.00	13.0	25.0	13.2	81.0	22	56.6	10
906564	HELU-S-PK-AL-FG-VZN 120-10	120.00 - 150.00	10.5	30.0	14.7	86.0	22	68.9	10
906565	HELU-S-PK-AL-FG-VZN 120-12	120.00 - 150.00	13.0	30.0	14.7	86.0	22	67.9	10
906566	HELU-S-PK-AL-FG-VZN 120-16	120.00 - 150.00	17.0	30.0	14.7	86.0	22	54.6	10
906567	HELU-S-PK-AL-FG-VZN 150-10	150.00 - 185.00	10.5	30.0	16.3	90.0	25	87.4	10
906568	HELU-S-PK-AL-FG-VZN 150-12	150.00 - 185.00	13.0	30.0	16.3	90.0	25	86.2	10
906569	HELU-S-PK-AL-FG-VZN 150-16	150.00 - 185.00	17.0	30.0	16.3	90.0	25	83.9	10
909868	HELU-S-PK-AL-FG-VZN 150-20	150.00 - 185.00	21.0	30.0	16.3	90.0	25	80.9	10
906570	HELU-S-PK-AL-FG-VZN 185-10	185.00 - 240.00	10.5	30.0	18.3	91.0	28	110.0	10
906571	HELU-S-PK-AL-FG-VZN 185-12	185.00 - 240.00	13.0	30.0	18.3	91.0	28	108.9	10
906572	HELU-S-PK-AL-FG-VZN 185-16	185.00 - 240.00	17.0	30.0	18.3	91.0	28	104.8	10
909869	HELU-S-PK-AL-FG-VZN 185-20	185.00 - 240.00	21.0	30.0	18.3	91.0	28	101.8	10
909870	HELU-S-PK-AL-FG-VZN 240-10	240.00 - 300.00	10.5	38.0	21.0	106.0	32	162.4	10
906573	HELU-S-PK-AL-FG-VZN 240-12	240.00 - 300.00	13.0	38.0	21.0	106.0	32	160.8	10
906574	HELU-S-PK-AL-FG-VZN 240-16	240.00 - 300.00	17.0	38.0	21.0	106.0	32	157.6	10
906575	HELU-S-PK-AL-FG-VZN 240-20	240.00 - 300.00	21.0	38.0	21.0	106.0	32	153.5	10
906576	HELU-S-PK-AL-FG-VZN 300-12	300.00	13.0	38.0	23.3	106.0	34	177.6	5
906577	HELU-S-PK-AL-FG-VZN 300-16	300.00	17.0	38.0	23.3	106.0	34	173.8	5
906578	HELU-S-PK-AL-FG-VZN 300-20	300.00	21.0	38.0	23.3	106.0	34	169.0	5
906579	HELU-S-PK-AL-FG-VZN 400-12	400.00	13.0	38.0	26.0	116.0	38.5	259.8	5
906580	HELU-S-PK-AL-FG-VZN 400-16	400.00	17.0	38.0	26.0	116.0	38.5	255.7	5
906581	HELU-S-PK-AL-FG-VZN 400-20	400.00	21.0	38.0	26.0	116.0	38.5	250.5	5
906582	HELU-S-PK-AL-FG-VZN 500-12	500.00	13.0	44.0	29.0	122.0	44	360.4	5
906583	HELU-S-PK-AL-FG-VZN 500-16	500.00	17.0	44.0	29.0	122.0	44	356.0	5
906584	HELU-S-PK-AL-FG-VZN 500-20	500.00	21.0	44.0	29.0	122.0	44	350.4	5

07.1.1.2023 / We reserve the right to make technical changes; the imprint in the image is purely exemplary