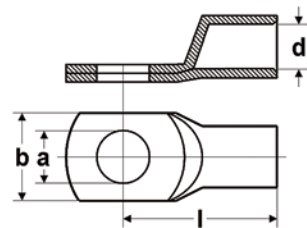


HELU-S-RK-F-CU

for finely stranded conductors



TECHNICAL DATA

Tubular cable lug

Flange shape Ring shape
 Connecting angle 180° (horizontal)
 Temperature range up to +120°C

■ STRUCTURE

- Material: copper acc. to DIN EN 13600
- Surface: galvanic tin plated
- uninsulated
- without Inspection hole

■ PROPERTIES

- for finely stranded conductors
- widened shaft; allows easy and safe insertion of conductor

■ NOTES

- Recommended pressing method: WM pressing
- Legend:
 - a - Diameter of stud hole
 - b - Width of flange
 - d - Inner diameter of wire receptable
 - l - Length to centre of hole

Part no.	Cross-sec. mm ²	Stud hole (M)	∅ Stud hole (a) in mm	Flange width (b) in mm	∅ Wire receptable (d) in mm	Length (l) in mm	Weight in kg/1000 pc.	Packaging unit (in pc.)
907409	10	5	5.3	12.0	5.0	23.0	7.0	100
907410	10	6	6.4	12.0	5.0	25.0	7.6	100
907411	10	8	8.4	15.0	5.0	28.0	8.9	100
907412	10	10	10.5	18.0	5.0	31.0	9.8	100
907413	10	12	13.0	20.0	5.0	32.0	10.0	100
907414	16	5	5.3	14.0	6.0	25.5	9.4	100
907415	16	6	6.4	14.0	6.0	27.0	10.0	100
907416	16	8	8.4	15.0	6.0	29.5	11.2	100
907417	16	10	10.5	18.0	6.0	32.0	11.2	100
907418	16	12	13.0	20.0	6.0	33.0	11.8	100
907419	25	6	6.4	16.0	7.7	32.0	14.7	100
907420	25	8	8.4	16.0	7.7	34.0	14.3	100
907421	25	10	10.5	18.0	7.7	35.0	15.3	100
907422	25	12	13.0	20.0	7.7	36.0	16.1	100
907423	25	16	17.0	26.0	7.7	40.5	19.1	100
907424	35	6	6.4	18.0	9.2	36.0	20.7	100
907425	35	8	8.4	18.0	9.2	36.0	20.7	100
907426	35	10	10.5	18.0	9.2	38.0	21.4	100
907427	35	12	13.0	23.0	9.2	40.0	22.2	100
907428	35	16	17.0	26.0	9.2	45.0	24.2	100
907429	50	6	6.4	22.0	11.2	42.0	32.5	100
907430	50	8	8.4	22.0	11.2	42.0	32.2	100
907431	50	10	10.5	22.0	11.2	43.0	33.3	100
907432	50	12	13.0	23.0	11.2	44.0	33.9	100
907433	50	14	15.0	25.0	11.2	45.5	36.0	100
907434	50	16	17.0	28.0	11.2	48.5	36.5	100
907435	70	6	6.4	25.0	13.5	46.0	44.3	50

Continued on next page

HELU-S-RK-F-CU

for finely stranded conductors

Part no.	Cross-sec. mm ²	Stud hole (M)	∅ Stud hole (a) in mm	Flange width (b) in mm	∅ Wire receptable (d) in mm	Length (l) in mm	Weight in kg/1000 pc.	Packaging unit (in pc.)
907436	70	8	8.4	25.0	13.5	45.5	48.0	50
907437	70	10	10.5	25.0	13.5	47.0	48.4	50
907438	70	12	13.0	26.0	13.5	47.0	48.4	50
907439	70	16	17.0	28.0	13.5	50.0	50.5	50
907440	70	20	21.0	31.0	13.5	54.5	55.2	50
907441	95	6	6.4	29.0	15.5	50.5	65.0	50
907442	95	8	8.4	29.0	15.5	50.5	66.2	50
907443	95	10	10.5	29.0	15.5	53.0	71.5	50
907444	95	12	13.0	29.0	15.5	52.5	71.1	50
907445	95	16	17.0	29.0	15.5	55.0	71.9	50
907446	95	20	21.0	35.0	15.5	60.0	76.1	50
907447	120	10	10.5	31.0	16.8	56.5	80.7	50
907448	120	12	13.0	31.0	16.8	56.0	80.7	50
907449	120	16	17.0	31.0	16.8	58.0	83.6	50
907450	120	20	21.0	35.0	16.8	63.0	87.5	50
907451	150	10	10.5	35.0	19.0	59.0	104.0	25
907452	150	12	13.0	35.0	19.0	58.5	106.2	25
907453	150	16	17.0	35.0	19.0	63.0	111.9	25
907454	150	20	21.0	35.0	19.0	66.0	116.1	25
907455	185	10	10.5	38.0	21.0	67.0	130.3	25
907456	185	13	13.0	38.0	21.0	67.0	121.5	25
907457	185	16	17.0	38.0	21.0	69.5	128.8	25
907458	185	20	21.0	38.0	21.0	71.0	139.5	25
907459	240	12	13.0	44.0	24.0	82.0	214.0	20
907460	240	16	17.0	44.0	24.0	85.0	219.4	20
907461	240	20	21.0	44.0	24.0	85.0	222.0	20