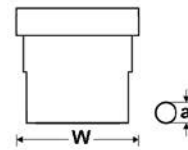


UNI-DICHT-SI-ASI



TECHNICAL DATA

TPV sealing insert

Temperature range -20°C to +100°C

■ STRUCTURE

- Material: thermoplastic vulcanizates (TPV)

■ PROPERTIES

- halogen-free
- phosphor-free
- silicone-free
- cadmium-free
- easy to assemble, time and cost savings
- Large-area sealing

■ APPLICATION

- Machine and plant construction
- Robotics
- Automation technology
- Installation technology
- Control cabinet construction
- For use with UNI-DICHT gland bodies made by polyamide or by brass. Profile fits to ASI- bus line.

■ NOTES

- The UNI-DICHT sealing inserts ASI (part nos. 905910 and 905911) can be used with UNI-DICHT-VK-PAM20x1,5 (part no. 90831). The UNI-DICHT sealing inserts ASI (part nos. 903992 and 903993) can be used with UNI-DICHT-VK-MS M20x1,5 (part no. 904213) and UNI-DICHT-VK-PA/MS PG13,5 (part no. 96045 and 904223).
- Legend:
Dimensions
W - Width
a - Diameter of stud hole

Part no.	Size	Size	Sealing insert colour	Packaging unit (in pc.)
905910		M20 x 1.5	grey, left	50
905911		M20 x 1.5	grey, right	50

Part no.	Size	Size	Sealing insert colour	Packaging unit (in pc.)
903992	PG 13.5	M20 x 1.5	grey, left	50
903993	PG 13.5	M20 x 1.5	grey, right	50