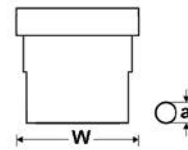


UNI-DICHT-SIC

closed



TECHNICAL DATA

TPV sealing insert

Temperature range -40°C to +135°C

■ STRUCTURE

- Material: thermoplastic vulcanizates (TPV)

■ PROPERTIES

- halogen-free
- phosphor-free
- silicone-free
- cadmium-free

■ APPLICATION

- Machine and plant construction
- Robotics
- Automation technology
- Vehicle construction and shipbuilding
- Railway technology
- Installation technology
- Control cabinet construction
- For use with UNI-DICHT gland bodies made by polyamide or by brass.

■ NOTES

- The UNI-DICHT sealing insert M20x1,5 (part no. 903944) can be used only with UNI-DICHT-VK-PAM20x1,5 (part no. 90831).
- The UNI-DICHT sealing insert M20x1,5 (part no. 903945) can be used only with UNI-DICHT-VK-MS M20x1,5 (part no. 904213).

• Legend:
Dimensions
W - Width
a - Diameter of stud hole

Part no.	Size	Size	Sealing insert colour	Packaging unit (in pc.)
903944		M20 x 1.5	white / short	100
903942	PG 9	M16 x 1.5	white	100
903943	PG 11	M20 x 1.5	white	100
903945	PG 13.5	M20 x 1.5	white	100
903946	PG 16	M25 x 1.5	white	100

Part no.	Size	Size	Sealing insert colour	Packaging unit (in pc.)
903947	PG 21	M32 x 1.5	white	50
903948	PG 29	M40 x 1.5	white	25
903949	PG 36	M50 x 1.5	white	10
903950	PG 42		white	10
903951	PG 48	M63 x 1.5	white	10