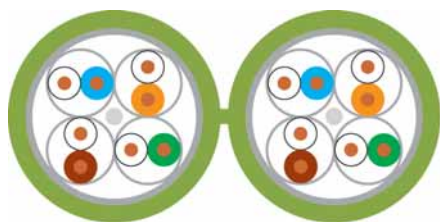


LAN Cable

Category 6

HELUKAT® 450

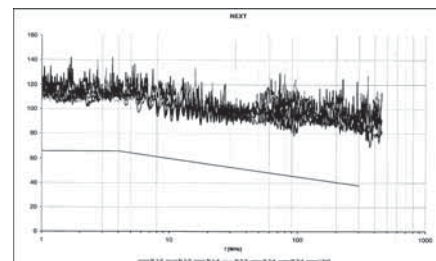
F/FTP duplex



Cable structure

Inner conductor Ø:	0,52 mm
Conductor material:	Copper, bare
Core insulation:	Foam-skin-PE
Core colours:	wh/bu, wh/og, wh/gn, wh/bn
Separator:	-
Screen over stranding element:	Al-Foil
Screen 1 over stranding:	Al-Foil
Screen 2 over stranding:	-
Drain wire:	yes
Outer sheath material:	FRNC
Cable dimensions:	app. 7,4 mm x 15,0 mm
Outer sheath colour:	Green similar to RAL 6018

F/FTP 2x(4x2xAWG 24/1) FRNC



Electrical data

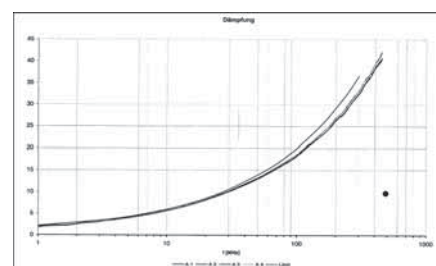
Characteristic impedance:	100 Ohm ± 15 Ohm at 1 to 100 MHz 100 Ohm ± 20 Ohm at 101 to 450 MHz
Loop resistance:	165 Ohm/km max.
Mutual capacitance:	43 nF/km nom.
Rel. propagation velocity:	79 %

Typical values

Frequency (MHz)	10	16	62,5	100	200	300	450
Attenuation (dB/100m)	5,4	7,0	13,8	17,6	26,0	34,0	38,5
Next (db)	100,0	100,0	95,8	94,5	91,0	87,0	84,3
ACR (db)	94,6	93,0	82,0	76,9	65,0	53,0	45,8

Technical data

Weight:	app. 100 kg/km
bending radius, repeated:	59 mm
Operating temperature range min.:	-20°C
Operating temperature range max.:	+60°C
Caloric load, approx. value:	1,14 MJ/m
Copper weight:	48,00 kg/km



Norms

Acc. to ISO/IEC 11801, Acc. to EN 50173, Acc. to EIA/TIA 568-A, Category 6, Flame-retardant acc. to IEC 60332-3, Smoke density acc. to IEC 61034, Halogen-free acc. to 60754-2, Corrosiveness acc. to EN50267-2-3

Application

HELUKAT®450 data cables are used in the tertiary, but also in the secondary level of a network. They are characterized by large performance reserves and outstanding performance. They can be used to implement services such as Gigabit Ethernet, Fast Ethernet, Ethernet, ATM155, FDDI, token ring 4/16 Mbit/s or ISDN absolutely trouble-free. Likewise, the mechanical characteristics are perfectly suited for the application in tight cable channels and platforms due to their optimized construction.

Part no.

82502, F/FTP 2x4x2xAWG 24/1 FRNC (S-STP)

Dimensions and specifications may be changed without prior notice.